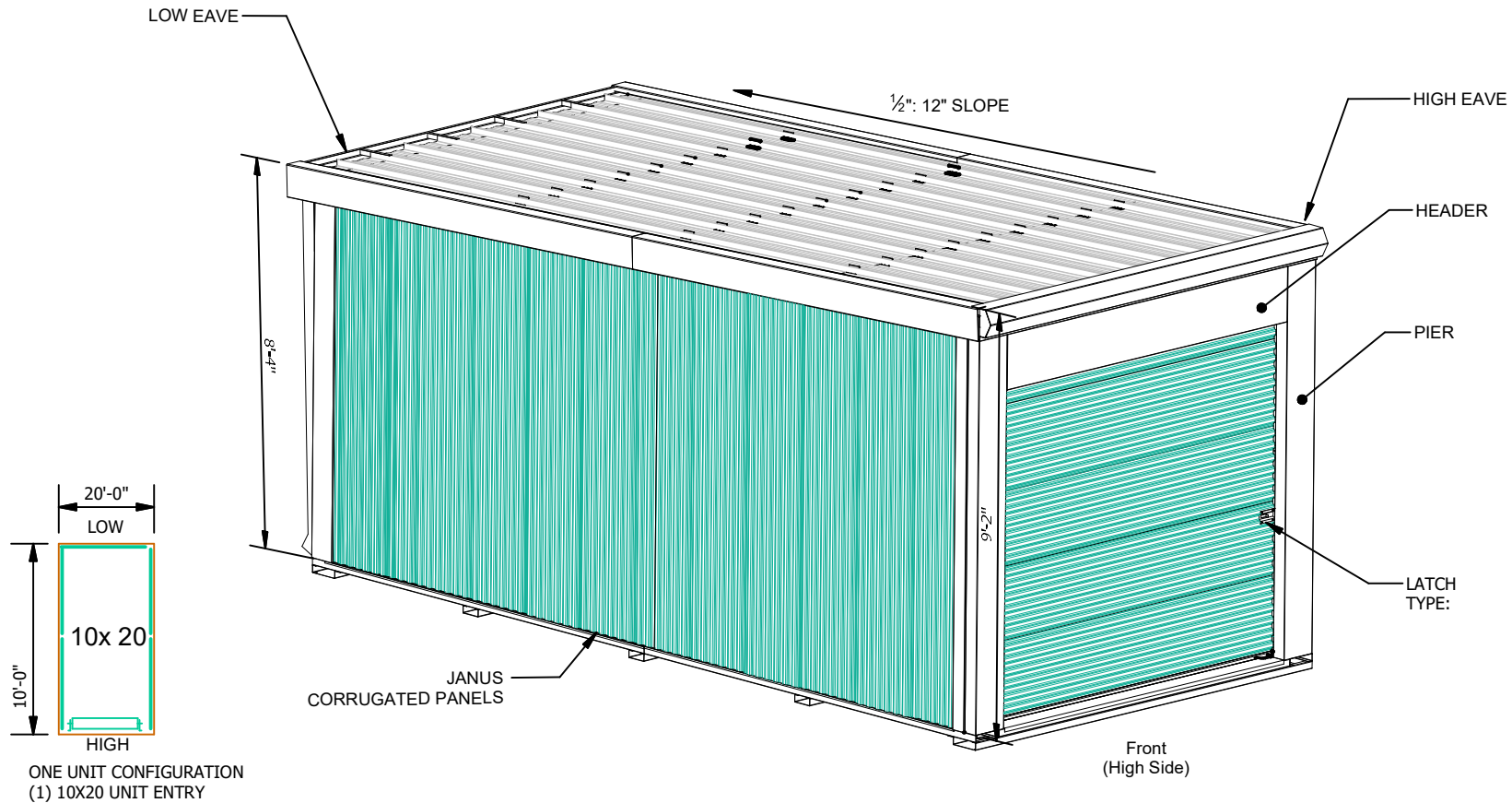


# MASS PORTABLE BUILDING COMPONENT



## 10X20 MASS PORTABLE BUILDING

NOTE: WHEN ORDERING REPLACEMENT PARTS SPECIFY PART NUMBER & DESCRIPTION [DO NOT USE MARK NUMBER]

- Step 1) Getting Started  
 PICK A LARGE CLEAR AND LEVEL AREA TO UNPACK YOUR PARTS. USE CARE AS YOU UNPACK, AS TO NOT TO SCRATCH OR DENT THE PRE FINISHED ITEMS.
- 2) Safety First  
 USE CAUTION WHEN LIFTING, MOVING OR ASSEMBLING THE METAL PARTS & PANELS AS THEIR EDGES CAN BE SHARP, MECHANICS GLOVES ARE RECOMMENDED. READ ALL THE INSTRUCTIONS PRIOR TO STARTING ANY WORK.
- 3) Tools Required  
 C-CLAMPS OR WELDERS VISE GRIPS, DRILL WITH BITS, CARPENTERS SQUARE, LINE UP TOOL, MAGNETIC 4' LEVEL, SCREW DRIVERS, SCREW GUN W/HEX BITS, SHEET METAL SNIPS, TAPE MEASURE, UTILITY KNIFE, WRENCHES, VISE GRIPS, CIRCULAR SAW, SOCKETS AND RATCHET.
- 4) Inventory Your Parts  
 UNPACK THE PARTS AT THIS TIME. REFER TO THE PARTS LIST FOR THE COMPLETE COMPONENT INVENTORY; NOTE ANY SHORTAGES.

BUILDING LOADS PER IBC 2012, 2015, 2018	
ROOF LIVE LOAD	20PSF
ROOF SNOW LOAD	30PSF
FLOOR LOAD (Equally distributed)	125PSF
DESIGN WIND SPEED	115mph

**WARNING**

THE FOLLOWING INSTRUCTIONS ARE INTENDED TO BE A GUIDE FOR THE PROFESSIONAL INSTALLER. LACK OF ADEQUATE KNOWLEDGE CAN POSE A THREAT OF SERIOUS INJURY TO THE NONPROFESSIONAL.



# Janus International Corporation

134 East Luke Road Temple, GA. 30179 770.562.2850 Janusintl.com

The arrangements depicted herein are the sole property of Janus International and may not be reproduced without it's written permission.

SCALE:	N.T.S.	PART NUMBER:	MANUFACTURED or PURCHASED MANUFACTURED
DATE:	06.20.22	DESCRIPTION:	10X20 MASS PORTABLE W/ END ENTRY (LEF)
DRAWN BY:	GERARD C.	DRAWING FILE NUMBER:	NUMBER OF SHEETS
CHECKED BY:	TARIK A.	<b>A</b>	1 OF 27